



EC Declaration of Conformity

Selec Controls Pvt. Ltd.

EL-27/1, Electronic zone, TTC Industrial Area,
Mahape, Navi Mumbai, India-400710.

Unique identification of the product

Declare that the DOC is issued under our sole responsibility and belong to the following product

Product Descriptions

Analog Voltmeter

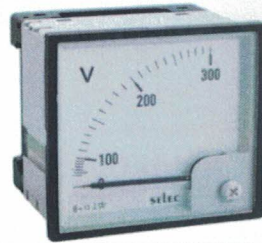
Type

Moving Iron

Model No.

AM-V-2-L, AM-V-2-N, AM-V-3-L, AM-V-3-N

Object of the declaration (identification of apparatus allowing trace-ability; it may include a color image of sufficient clarity where necessary for the identification of the apparatus)



The object of the declaration described above is in conformity with the relevant union harmonization legislation

Electromagnetic Compatibility Directive (EMC), 2014/30/EU

Low Voltage Directive (LVD), 2014/35/EU

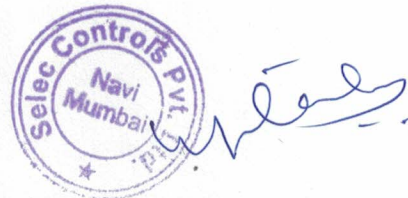
RoHS Directive, 2015/863/EU

The following harmonized standards and technical specifications have been applied

Title	Date of standard / Specification
IEC 61326-1	Edi 3.0 2020-10
IEC 60051-1	Edi 6.0 2016-02
IEC 61010-1	Edi 3.0 2016-12

Signed for and on behalf of :-

Selec Controls Pvt Ltd,
Navi Mumbai
02/06/2023



Place and date of issue

Reviewed & Approved by :
Mr. Uday Tandel, Manager Electrical



Product Name:- Analog Voltmeter

Record No.:- Selec/RoHS/Version-2.0



RoHS Declaration of Conformity

Selec Controls Pvt. Ltd.
EL-27/1, Electronic zone, TTC Industrial Area,
Mahape, Navi Mumbai, India-400710.

Declare under sole responsibility that the following described products Analog Voltmeter

Product Descriptions

Analog Voltmeter

Model No.

AM-V-2-L, AM-V-2-N, AM-V-3-L, AM-V-3-N

was affixed with RoHS marked in the year: 2020

To which this declaration relates is in compliance with Directive **2015/863/EU** of 31 March 2015 amending Annex II to Directive **2011/65/EU** of the European Parliament and of the Council of 8 June 2011 on the restriction of the use of certain hazardous substances in electrical and electronic equipment (RoHS Directive) in accordance with the definitions set forth in the directives.

RoHS Restricted Substances	Maximum Control Value
Lead	0.10% by weight (1,000 ppm)
Mercury	0.10% by weight (1,000 ppm)
Cadmium	0.01% by weight (100 ppm)
Hexavalent Chromium	0.10% by weight (1,000 ppm)
Polybrominated Biphenyls (PBB)	0.10% by weight (1,000 ppm)
Polybrominated diphenylethers (PBDEs) including Deca-BDE or pentaBDE or octaBDE	0.10% by weight (1,000 ppm)
Bis (2-ethylhexyl) phthalate (DEHP)	0.10% by weight (1,000 ppm)
Butyl benzyl phthalate (BBP)	0.10% by weight (1,000 ppm)
Dibutyl phthalate (DBP)	0.10% by weight (1,000 ppm)
Diisobutyl phthalate (DIBP)	0.10% by weight (1,000 ppm)

The Technical data file is maintained at Selec Controls Pvt. Ltd., Navi Mumbai, India

Signed for and on behalf of :-

Selec Controls Pvt Ltd,
Navi Mumbai
02/06/2023



Place and date of issue

Reviewed & Approved by :
Mr. Uday Tandel, Manager Electrical