



Features :

- True RMS Measurement
- Non-Linear Scale
- Knife Edge Pointer
- Grey Lexan Housing
- Panel Mounting

Certification : CE

Scale and Pointer

Pointer	Knife - edge pointer
Pointer deflection	45° - 0° - 45°
Scale characteristics	Non-Linear scale
Scale length	AM-PF-2 : 63mm AM-PF-3 : 97mm

Electrical Specifications

Measured Parameters	Power Factor
Measuring Range	0.5 CAP to 0.5 IND
Overload Capacity Continuously	1.2 times rated voltage / current
Power Consumption	For Voltage : <2VA For Current : <2VA
Accuracy	Class 1.5
Dielectric test	2 kV AC for 1 Minute
Enclosure code	IP42 IP56 for back
Rated insulation voltage	500V DC for 1 min

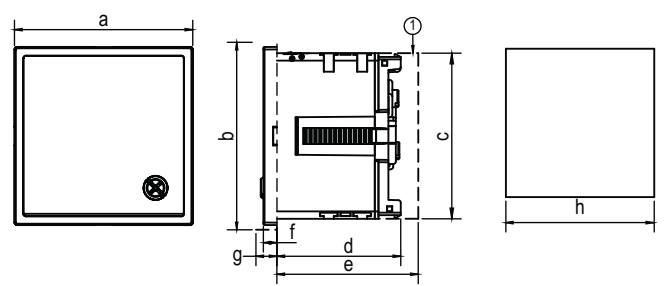
Environmental Conditions

Operating temperature	0°C to 60°C
Storage temperature	-20°C to 60°C
Relative humidity	upto 75%
Shock resistance	15gn, 11 ms
Vibration resistance	10-55-10Hz/0.15mm
Pollution degree	2

Mechanical Specifications

Case details	Moulded casing
Case material	Lexan – Polycarbonate
Front facia	Glass
Color of bezel	Black
Position of use	Vertical
Panel fixing	Clamps
Mounting	Panel Mounting
Terminals	Hexagon studs, M4 screws and clamps M3
Weight	AM-Hz-2 : 0.16 kg AM-Hz-3 : 0.23 Kg
Dimensions	AM-Hz-2 : 72x72mm AM-Hz-3 : 96x96mm

Dimensions (All are in mm)

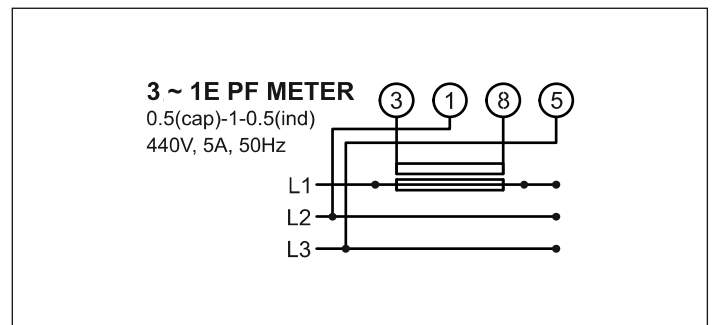


Product	72x72	96x96
Dimensions (in mm)		
a	72	96
b	74.50	98.50
c	67	90.50
d	50	50
e	60	60
f	5.50	5.50
g	8	8
h	68	92

Optional parts :

- 1 - Back Cover
- 2 - IP65 : Cover for all type of AM series

Terminal Connections



Compliance

Applicable EMI / EMC Standards		
Product Standard : IEC 60051-2		
Category		Standards Compliance
ESD Immunity	IEC 61000-4-2	Contact Discharge : 4kV (Criteria B) Air Discharge : 8kV (Criteria B)
Surge Immunity	IEC 61000-4-5	0.5kV (for L-L) (Criteria B)
Radiated Susceptibility	IEC 61000-4-2	800MHz to 1GHz (10V/m) (Criteria A) 1.4GHz to 2GHz (3V/m) (Criteria A) 2GHz to 2.7GHz (1V/m) (Criteria A)
Conducted Susceptibility	IEC 61000-4-6	3V (Criteria A)
PFMF	IEC 61000-4-8	30 A/M (50Hz, 60Hz) (Criteria A)
Voltage Dips and Interruptions	IEC 61000-4-11	VDI : 0% during 1 cycle (Criteria B), 40% during 10 / 12 cycles (Criteria C) 70% during 25 / 30 cycles (Criteria C) Short Interruptions : 0% during 250 / 300 cycles (Criteria C)
Electrical Fast Transient	IEC 61000-4-4	1kV (Criteria B)

Ordering Information

Product Code (Meters Without Dial Plates)	Certification
AM-PF-3-3P1E-0.5 CAP-1-0.5 IND-415V-5A	---
AM-PF-2-3P1E-0.5 CAP-1-0.5 IND-415V-5A	---
AM-PF-3-3P1E-0.5 CAP-1-0.5 IND-440V-5A	---
AM-PF-2-3P1E-0.5 CAP-1-0.5 IND-440V-5A	---
AM-PF-3-3P1E-0.5 CAP-1-0.5 IND-415V-5A-CE	---
AM-PF-2-3P1E-0.5 CAP-1-0.5 IND-415V-5A-CE	---
AM-PF-3-3P1E-0.5 CAP-1-0.5 IND-440V-5A-CE	---
AM-PF-2-3P1E-0.5 CAP-1-0.5 IND-440V-5A-CE	---